



**British  
Geological Survey**

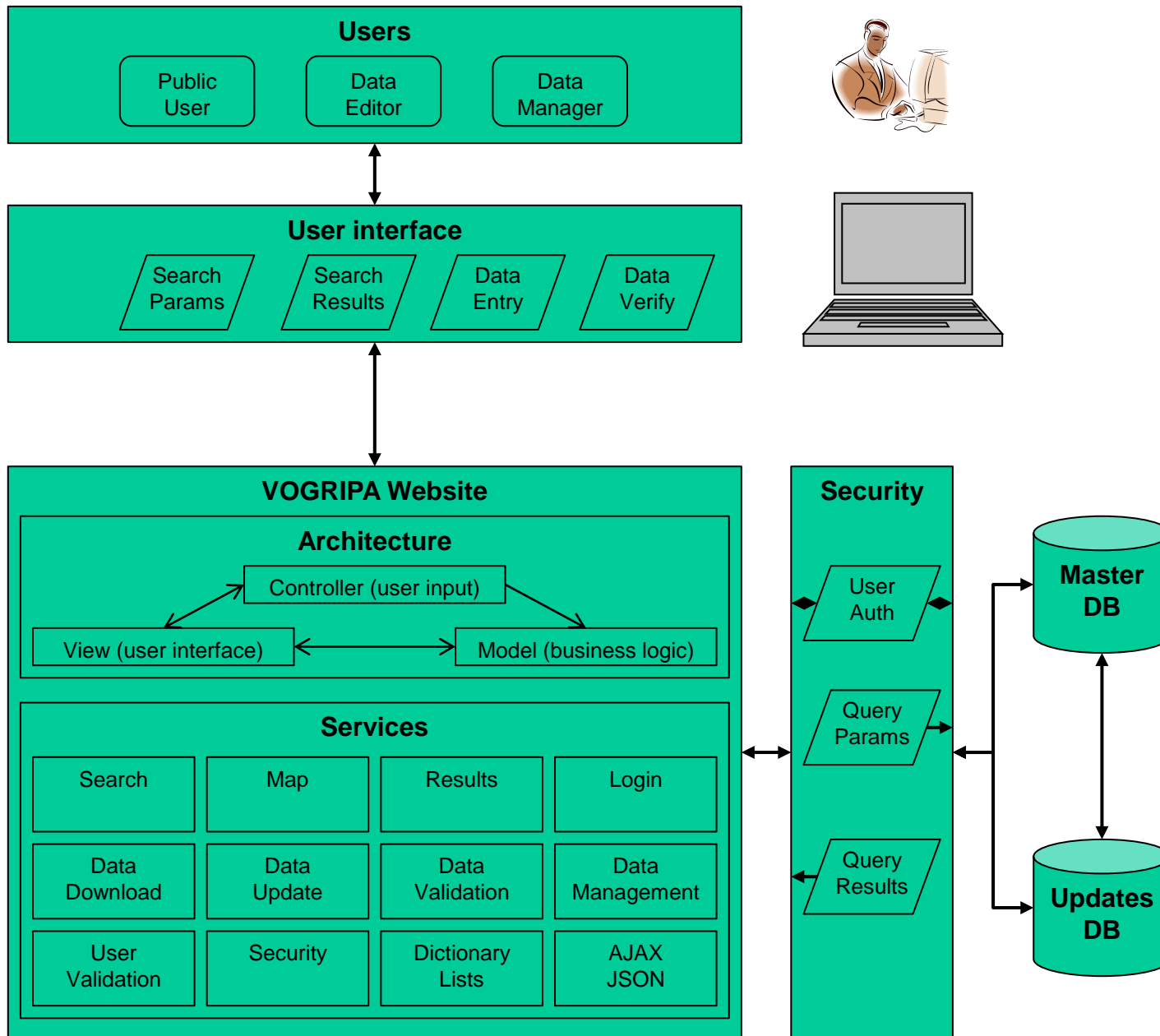
NATURAL ENVIRONMENT RESEARCH COUNCIL

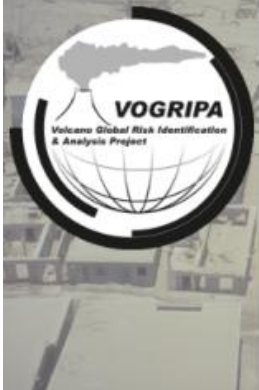
Applied geoscience for our  
changing Earth

# VOGRIPA

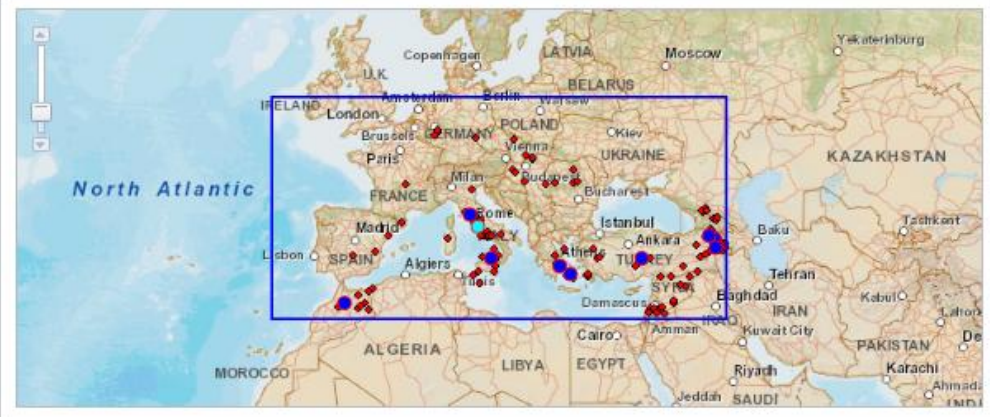
## Database and Web development

Martin Nayembil, Jonathan Lowndes Baneet Arora





Map Results



Options

- Refine this Search
- Start a new Search
- Download as a spreadsheet

Filter

- Volcano Type
- Region

Search terms

- Volcano Name: any
- Alternate Name: any
- Volcano Type: any
- Eruption date: any
- Magnitude: any
- Region: any
- Sub Region: any
- Composition: any
- Bulk Volume: any
- DRE Volume: any
- Col Height: any
- Airfall Tephra: any

Search returned 123 results. Displaying results 1 to 10

Volcano Name	Volcano Type	Region	Eruption Details		
			St Date	Unit Name	Properties
<a href="#">Acigöl- Nevşehir</a>	Caldera(s)	Turkey (Mediterranean and W Asia)	110000 BP +/-40000	Upper Acigöl Tuff	Magnitude: 6 Composition: Rhyolite Bulk Vol: 15 DRE Vol: 7
			180000 BP +/-0	Lower Acigöl Tuff	Magnitude: 6 Composition: Rhyolite Bulk Vol: 13 DRE Vol: 6
<a href="#">Aegina</a>	Not Available	Greece (Mediterranean and W Asia)			
<a href="#">Alban Hills</a>	Caldera(s)	Italy (Mediterranean and W Asia)	23000 BP +/-6700	Peperino Albano ignimbrite	Magnitude: 4 Composition: Not Available Bulk Vol: 0 DRE Vol: 0
			353000 BP +/-0	Villa Senni Eruptive Unit	Airfall Tephra: 81
			37000 BP +/-0	Artemisio (Alban Hills) II	Bulk Vol: 225 DRE Vol: 90
			407000 BP	Pozzolane Nere Ignimbrite	Magnitude: 6 Composition:

Page: 1 2 3 4 5 Next Last Results per page: 10





# Key development stages

- Re-design of LaMEVE  
Rules, Standardised relational structure,  
vocabularies
- Implementation, transformation and loading of data
- Design and develop services and website
- Design and develop of online data entry
- Implementation of security systems